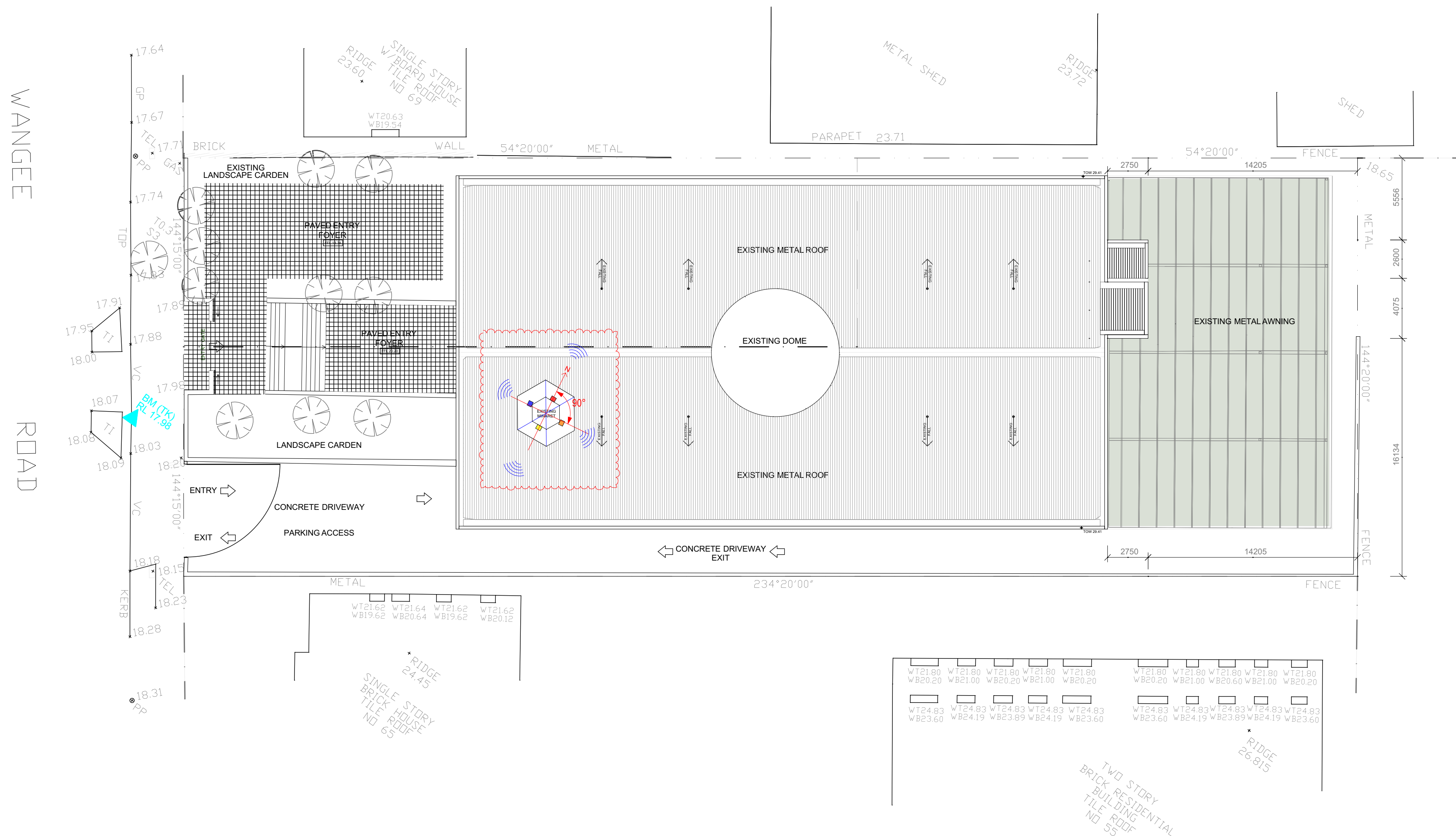


Regulated Design Board					
Project Address:	65-67 Wangee Road Lakemba NSW Australia				
Project Title:	Residential Development				
Consent No:	*****		Body Corporate Reg No: --		
Drawing Title:	SPEAKER SITE ANALYSIS			Drawing No: A020	
Rev	Date	PLAN Description	DP Full Name	Reg No:	



1
A020

A	A	ISSUED FOR COORDINATION					
B	B	ISSUE FOR DA	LJ				
Rev	Date	Amendment	By	Rev	Date	Amendment	By

GENERAL NOTES:

- ALL DIMENSIONS AND SIZES ARE IN MILLIMETRES. DO NOT SCALE DRAWINGS. PREFERENCES OF DIMENSIONED MEASUREMENT TO BE TAKEN OVER SCALE MEASUREMENTS.
- ALL WALL THICKNESSES DIMENSIONED UNLESS OTHERWISE NOTED. DIMENSIONS SIZES ONLY.
- IF INFORMATION INDICATED IN THIS DOCUMENT MAY BE CRUCIAL TO THE SAFE AND PROPER FUNCTIONING OF THE PROJECT, DO NOT ALTER ANY ASPECT WITHOUT REFERENCE TO THE ARCHITECT.
- 4 READ THIS DRAWING IN CONJUNCTION WITH RELEVANT CONSULTANT DRAWINGS AND SPECIFICATIONS.
- 5 INFORM THE ARCHITECT OF ANY DISCREPANCIES IMMEDIATELY.
- 6 THE WORK IS TO BE COMPLETED IN ACCORDANCE WITH THE NATIONAL CONSTRUCTION CODE OF AUSTRALIA, AUSTRALIAN STANDARDS, SAA CODES AND ALL RELEVANT CONDITIONS BY-LAW.
- 7 ALL BUILDING / MANUFACTURER SPECIFICATIONS, DIMENSIONS, RULING, GUIDELINES AND CONSTRUCTION METHODS PRIOR TO COMMENCEMENT OF WORK.
- 8 A COPY OF THIS PLAN IS TO BE SUBMITTED BY THE PROPRIETOR TO THE WATERBOARD FOR APPROVAL AS A CONDITION OF THE WATERBOARD'S CONSENT.
- 9 THIS DRAWING IS PROTECTED BY COPYRIGHT. IT MAY ONLY BE USED FOR THE PURPOSE FOR WHICH IT IS ISSUED.

Structural Engineer: Info Project Details

Mechanical Services:
Info Project Details

Electrical Services: Info Project Details

Hydraulic Services:
Info Project Details

Fire Services:
Info Project Details

BCA and Access Consultant:
Info Project DetailsPrincipal Certifying Authority:
Info Project Details

Landscape Architect:
Info Project Details

Acoustic Engineer: Info Project Details

ISSUE FOR DA

Project: ADDITIONS TO EXISTING BUILDING
Client: Lebanese Muslim Association

Address:
67 Wangee Road, Lakemba, NSW 2195

Project No: 0836

Checked: Drawn

PD LJ

Scale@A1: 1:200

00/10

Drawing Title:
**SPEAKER SITE ANALYSIS
PLAN**

Revision:

B

Drawing No:

A020



ADS ASSOCIATES PTY LTD
 ABN: 99 674 437 444
 1/7 Murray Rose Avenue
 Sydney Olympic Park NSW 2127
 P: 02 9763 1888
info@adsarchitects.com | www.adsarchitects.com
 NSW Nominated Architect Pavlo Doroch 9170
 Design Practitioner Pavlo Doroch DEP0000211

iD-MH Series IP56 Rated Outdoor Two-Way Loudspeakers



High SPL Loudspeakers

The ID-MH Series are high SPL two-way structured plastic cabinet systems with weather and UV resistant housing, designed for medium to long distance sound reinforcement applications.

Features

- Strong plastic cabinet, weather and UV resistant (IP56)
- High SPL output (80hms/100V)
- Horn loaded HF coaxially mounted with the LF driver providing 100° x 100° (ID-MH158 WH) or 80° x 80° (ID-MH1512 WH) accurate dispersion.

Applications

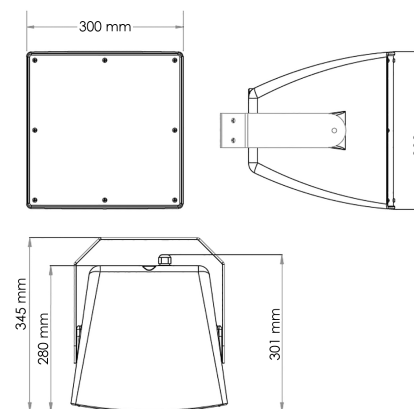
Suitable for long/middle sound reinforcement distances such as: public venues
eg. stadiums, factories, schools and sports grounds.

MODEL	IQMH158 WH
Frequency response	80Hz-16kHz +3dB
Drivers	1x 8" (200mm) / 2" voice coil HF, 1x 1/2" (125mm) / 1.4" voice coil LF
Power	100V Line Input 37.5W/75W/150W 8Ω / 150W
Sensitivity	96dB 1W@1 metre
Maximum SPL	127dB continuous, 123dB peak
Impedance	8Ω nominal
Dispersion (°dB)	100° x 100°
Crossover	2.5kHz passive
IP rating	IP56 (Applicable Standards – EN 60529)
Dimensions (W x H x D)	300 x 302 x 334 mm
Weight	10kg
UBrackets (included)	Power-coated 316 stainless steel


Description and specifications are correct at time of printing. Maybe subject to change without notice.


Dimensions

ID-MH158 WH



 NORTH-FACING SPEAKER
92 dBA MAXIMUM
APPROXIMATELY 18m
FROM NATURAL GROUND

 EAST-FACING SPEAKER
90 dBA MAXIMUM
APPROXIMATELY 18m
FROM NATURAL GROUND

 SOUTH-FACING SPEAKER
83 dBA MAXIMUM
APPROXIMATELY 18m
FROM NATURAL GROUND

WEST-FACING SPEAKER
92 dBA MAXIMUM
APPROXIMATELY 18m
FROM NATURAL GROUND